



Pennsylvania Department of the

AUDITOR GENERAL

Facebook: Pennsylvania Auditor General

Twitter: @PaAuditorGen

News for Immediate Release

Sept. 22, 2016

Auditor General DePasquale Says Audits of PA Cyber Charter School, Two Other Schools Reaffirm Need to Overhaul Charter School Law

Says all charter boards should be publicly elected, management companies subject to Open Records Law

HARRISBURG – Auditor General Eugene DePasquale today said recent audits of Pennsylvania Cyber Charter School (PA Cyber), which enrolls students from 484 districts, and two related schools in Beaver County once again demonstrate the urgent need to overhaul the worst charter school law in the nation.

“Our audits of PA Cyber, the Lincoln Park Performing Arts Charter School, and, to a much lesser extent, Midland Borough School District illustrate just how poorly our charter school law is protecting students and taxpayers and ensuring that education dollars help students learn, not help individuals profit,” DePasquale said during a news conference to announce audit reports on the three schools.

“Auditors found that leaders involved with all three of these schools had intermingled relationships that put individual self-interests above student needs while controlling hundreds of millions of taxpayer education funds from nearly every district in the state,” he said.

DePasquale noted that Nicholas Trombetta, a former superintendent of the Midland Borough School District (1995-2007) is credited with:

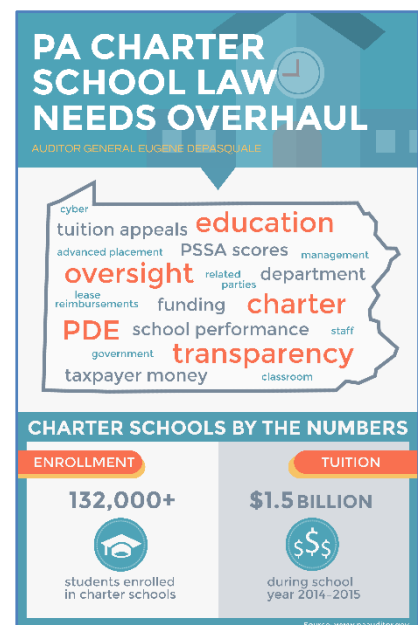
- founding PA Cyber Charter School and serving as CEO (2000-2012),
- founding the Lincoln Park Performing Arts Center and serving as its executive director (2002-2006),
- founding the charter school management company National Network of Digital Schools (NNDS), which is now Lincoln Learning Solutions (LLS), and serving as president (2005-2008), and
- founding the Lincoln Park Performing Arts Charter School (2005), housed in the arts center, and serving as an officer.

“One reason I can say that Pennsylvania has the worst charter school law in the nation is because Trombetta, the individual behind all these entities who recently pled guilty to tax evasion, took advantage of every flaw in the law to get rich off the backs of students and taxpayers,” DePasquale said.

“Interestingly, most of the serious problems – particularly those associated with the management company, lack of transparency and related-party transactions — that we found in our audits are permitted under the current charter school law,” he said. “That is beyond ridiculous, and it needs to change now.”

Not a criticism of charter schools

“The problems I continue to point out with the charter school law should not be taken as an indictment of charter schools and performing arts in general,” DePasquale said. “We have some excellent charter schools



and performing arts centers in Pennsylvania providing outstanding educational opportunities for students.

“Most of the problems we see in our audits can be traced directly back to gray areas in the 20-year-old charter school law, not issues caused by the charter schools themselves.”

Major overhaul of charter school law needed

DePasquale said the three audits brought to light two more reasons that the state’s charter school law needs to be overhauled.

“It is clear that the charter school management company was operating without boundaries or accountability to the officials from either charter school or to the taxpayers, who were footing the bill,” DePasquale said. “As a result, we really have no idea what was provided by the management company in return for the public education money it received.”

The multiple, convoluted inter-relationships between the hand-picked members of the two charter school’s boards made it clear that the public needs input into the process for selecting all individuals who will be trusted with hundreds of millions in education funding.

“I urge the legislature to make charter school management companies, which receive millions upon millions of taxpayer dollars, explicitly subject to Pennsylvania’s open records law,” DePasquale said. “The charter school law also needs to include a provision to allow public input on who is given the role of a trustee charged with overseeing cyber charter school operations.

“In the case of PA Cyber Charter School, publicly elected school boards from nearly every school district in the state are sending state and local tax dollars to the cyber school with zero input and accountability.”

These changes are in addition to the recommendations to improve accountability, effectiveness and transparency included in [DePasquale’s special report on charter school law reform](#), which is available online.

PA Cyber Charter School

The 91-page audit report on the Beaver County-based PA Cyber Charter School, which has nearly 10,000 students enrolled from 484 school districts across the state, covers May 2011 through March 2016 and contains eight findings and 23 recommendations. Major issues include:

Problems with curriculum and management company

PA Cyber’s board and administration failed to oversee the curriculum, management, and other services provided by the management company, NNDS/LLS. During the three years ending June 30, 2014, PA Cyber paid \$153.8 million — nearly half of the school’s annual expenditures — to the management company with little or no oversight and accountability.

For example:

- Rather than a cost-based fee formula, the management services agreement stipulated that NNDS/LLS would receive 12 percent of PA Cyber’s revenues received from school districts.

Top 20 Sending School Districts			
PA Cyber Charter School had 9,618 Students from 484 School Districts Enrolled as of Oct. 1, 2014			
School District	Non-Special Enrollment	Special Enrollment	
1 Philadelphia City SD	383	42	
2 Pittsburgh SD	241	60	
3 Erie City SD	151	38	
4 Chester-Upland SD	106	8	
5 Butler Area SD	100	15	
6 Hempfield Area SD	84	18	
7 Allentown City SD	82	14	
8 Connellsville Area SD	79	19	
9 Central Dauphin SD	78	15	
10 Pleasant Valley SD	69	7	
11 Conneaut SD	67	10	
12 Harrisburg City SD	64	28	
13 Penncrest SD	64	19	
14 West Shore SD	62	12	
15 Norwin SD	60	10	
16 Crawford Central SD	57	12	
17 Kiski Area SD	56	9	
18 Bethlehem Area SD	54	13	
19 Pocono Mountain SD	53	11	
20 Woodland Hills SD	53	11	

- The curriculum contract, worth \$110 million over three years, initially had no terms or conditions in the one-page memorandum of understanding.
- During the 2014-15 school year, PA Cyber solicited bids for both curriculum and separate management services, but the same management company — NNDS/LLS — was awarded all of the contracts.
- A new five-year curriculum services agreement adopted by the board for the 2015-16 school year included a nonperformance clause with financial penalties. However, when the management company missed three of four deadlines to deliver new curriculum, PA Cyber’s board unanimously voted to waive the \$4.2 million in penalties.

“Pennsylvanians should be particularly incensed that not only did this management company fail to deliver curriculum on time, but officials at PA Cyber also gave them a \$4.2 million pass on penalties,” DePasquale said. “We also heard that because of delays in delivering the curriculum, teachers were left to fend for themselves and develop their own curriculum so they could be ready to teach students at the beginning of the school year.

“That penalty money should have been used to provide additional classroom resources to teachers and their students. Instead it went to the management company that failed to deliver on its promises.”

Board and administration failed to govern

Auditors found that PA Cyber’s board and administration failed to adequately govern numerous related-party transactions involving millions of dollars of public education funds.

Aside from the connections to the founder and CEO, auditors found that several trustees and administrators were related to other individuals or organizations doing business with PA Cyber.

A few examples of related-parties involved in decision-making roles:

- The cyber charter school CEO’s spouse served as a compensated employee and as the board secretary for the arts center;
- A trustee’s son was employed as director of operations for the management company, and as the executive director of the arts center;
- A former trustee of the cyber charter school became a senior administrator at the local school district, previously served as board president for the cyber school’s management company, and served as a board member for the arts center; and
- A trustee was co-owner of a computer equipment company that received over \$1.1 million in business from the cyber charter school.

“I will be sending this audit report to the State Ethics Commission and the U.S. Department of Education, Office of Inspector General to review the variety of related-party transactions,” DePasquale said. “Again, while the state ethics act, guidelines for federal funding, and good business practices might preclude such transactions, the current charter school law does not prevent this sort of scenario from happening.”

Additionally, auditors found that a former board president’s daughter received a potentially improper dual-enrollment college tuition reimbursement of \$32,328, which was not available to other students in the 2012-13 and 2013-14 school years.

The Public School Code explicitly excludes charter schools from starting dual-enrollment programs.

Student attendance not monitored

Auditors noted that PA Cyber did not monitor or enforce its own student attendance policy for its virtual classrooms from the 2011-12 through 2015-16 school years.

“We found that PA Cyber considered a student ‘present’ if he or she logged on at the beginning of the day,” DePasquale said. “After that, they made no effort to ensure students were attending online classes. Therefore, there is no way of ensuring that a student was in attendance for the day, or playing computer games or outside shooting hoops.”

Failure to collect IT equipment from students who graduated, withdrew

A review of PA Cyber’s inventory files showed that with the exception of laptop computers, the school failed to collect IT equipment from students who graduated or withdrew from the school.

Based on 2013-14 enrollment of 10,389, student IT equipment costs would have been over \$10.3 million for those students, assuming that they all enrolled that year.

While 85 percent of that cost was attributable to laptop computers (valued at \$839 each), which were collected by the cyber charter school, 15 percent, or approximately \$1.5 million, would have been attributed to the other equipment that was not collected.

The uncollected equipment included printers, digital tablets, headphones, carrying cases and ink cartridges, with a total value of approximately \$150 per student. In addition, students were provided with Fitbit exercise trackers as part of the physical education class curriculum provided through the management company.

“It was essentially a give-away,” DePasquale said. “The IT equipment — with the exception of laptops — was not collected, even if a student withdrew after only a short enrollment. Even if there is a cost associated with collecting the equipment, giving it away hardly seems like a sound financial practice. In some cases, this IT equipment could have been refurbished and provided to another student.”

Financially detrimental arrangement with performing arts center

Auditors found that in 2005, PA Cyber provided what it called a “pre-paid lease” of \$10 million to a local performing arts center — founded by the charter’s CEO — while it was under construction. In 2009, PA Cyber converted the \$8.5 million balance of the pre-paid lease to a 25-year note receivable, meaning the arts center now pays PA Cyber \$340,000 per year.

“By our estimate, if the \$8.5 million converted in 2009 had instead been invested, it would have yielded more than \$1.4 million in interest income by the end of the 25 years, making PA Cyber’s arrangement a poor use of public funds,” DePasquale said, noting that his audit of the Midland Borough School District revealed the district’s pre-paid lease arrangement means the district is paying the arts center \$150,000 per year for the same space.

Failure to maintain sufficient documentation to support teacher certifications

A review of PA Cyber’s teacher certification files showed that instructional certificates may be unreliable because of incomplete or missing required evaluations in educators’ personnel files.

As a result, auditors believe PA Cyber’s educators may have received instructional certificates without having first met the evaluation and requirements of PDE. PA Cyber officials blame the missing documentation on the management company NNDS/LLS which, until 2015, was charged with maintaining the files.

“The teachers may have the proper experience and credentials, but because PA Cyber failed to provide the required documentation, it raises a question that must be addressed so that parents can have confidence in the quality of education their student receives,” DePasquale said.

High advertising costs continue

DePasquale said PA Cyber continues to spend heavily – about \$2 million a year – on advertising and public outreach to attract potential students from throughout the commonwealth.

“I am not happy about this advertising spending,” DePasquale said. “I do understand that some advertising may be necessary. However, I would hope that some type of agreement could be worked out between PA Cyber and the school districts to reduce the need for expensive television advertisements and billboards, and still maintain healthy enrollment numbers.”

Lincoln Park Performing Arts Charter School, Beaver County

The 23-page audit of Lincoln Park Performing Arts Charter School found a lack of transparency and poor oversight of the NNDS/LLS management company, which provided the brick-and-mortar charter school with management services and curriculum leases totaling nearly \$3.3 million over four years.

The audit report covers July 2011 through June 2014; it includes two findings and six recommendations.

“Since Lincoln Park Performing Arts Charter School and NNDS/LLS were founded by the same individual, it is of utmost importance that school officials and trustees strive to be as transparent as possible,” DePasquale said. “Unfortunately, that has not been the case here.

“Lincoln Park Charter School must do a better job of overseeing the management company, which at present is almost entirely running the show without the necessary involvement of the charter’s board of trustees.”

Auditors found that Lincoln Park charter school granted contracts to the management company without soliciting bids for either management services or curriculum leases.

School leadership also failed to implement best practices in their use of public funds because they made inadequate agreements with the management company, including a revenue-based fee structure, vague enumeration of services, automatic renewal clauses and no vendor accountability requirements.

DePasquale said the fee formula was of serious concern, noting that the agreement stipulated the management company would receive revenue payment based on the school’s revenue rather than on services provided. The revenue-based management services fees included:

- 12 percent of the tuition received from sending school districts in school years 2011-12 and 2012-13, and
- 10 percent of tuition received in 2013-14 and 2014-15.

LINCOLN PARK PERFORMING ARTS CS PAYMENTS TO MANAGEMENT COMPANY				
Fiscal Year	Management Services	Curriculum Leases	Other Costs	Total
2011-12	\$671,165	\$100,000	\$48,773	\$819,938
2012-13	\$709,090	\$100,000	\$4,049	\$813,139
2013-14	\$647,634	\$76,319	\$3,624	\$727,577
2014-15	\$808,544	\$111,434	\$7,563	\$927,541
Total	\$2,836,433	\$387,753	\$64,009	\$3,288,195

“This fee structure further eroded the level of accountability required of the vendor, since fees were not based upon actual costs of services,” DePasquale said. “Publicly funded charter schools are meant to provide an alternative opportunity to educate students, not to line the pockets of private individuals and management companies.”

Failure to maintain bus driver qualifications, clearances

In addition to the findings associated with the management company, auditors noted the charter school was unable to produce any of the required employment qualifications and clearances for the 11 bus drivers who transported students during the 2014-15 school year.

The bus contractor eventually provided the charter school with qualifications and criminal history clearances for all 11 bus drivers. A review of this documentation did not reveal any concerns with the bus drivers and the drivers' suitability to transport students.

"As a result of our review of bus driver qualifications and our discussion with charter school officials, they did obtain, review and maintain documentation to support that each bus driver was qualified and suitable to transport students during the 2015-16 school year," DePasquale said.

Midland Borough School District, Beaver County

In the 29-page report on Midland Borough School District, auditors found that it had a \$1.5 million balance on a long-term, pre-paid lease to use the Lincoln Performing Arts Center — founded by a former Midland school superintendent — to host arts classes and occasional special events for students and the community.

"When we asked the district to provide documentation of its use of the arts center, it provided us with letters on district letterhead announcing occasional special events, such as musical performances and arts charter school graduation ceremonies, which were sponsored by the district even though the district doesn't enroll high school students," DePasquale said. "With the limited use, it does not seem to be a good use of \$150,000 per year in public education funds."

Despite the fact that the district rents space from the performing arts center, the district rents out its own gymnasium and six classrooms for approximately \$45,000 per year to the Lincoln Park Performing Arts Charter School, which is housed in the arts center.

"There is a lot of public money changing hands in so many various and assorted deals and agreements that it leaves one to question who is benefiting, students or the adults making the deals," DePasquale said.

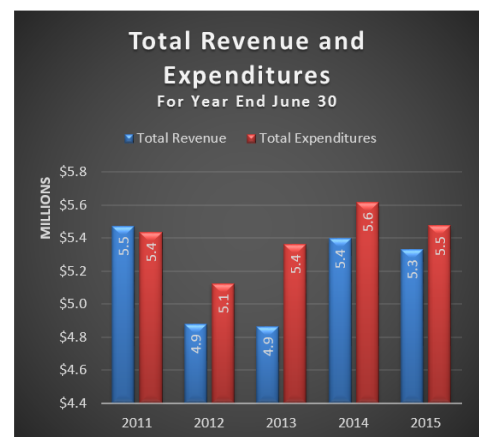
The district also paid the NNDS/LLS management company almost \$800,000 in the past six years for services without utilizing an open and public procurement process.

"While the district is not required to bid for professional services, due to multiple related parties involved there should be increased transparency and accountability," DePasquale said. "Remarkably, while individuals serving in simultaneous roles is not prohibited by the current charter school law or the Ethics Act, such situations provide an appearance of a conflict of interest that should be mitigated."

Financial difficulties

The audit shows that the district is plagued by deficit spending, causing the general fund balance to drop nearly \$1 million since 2011.

Auditors found that the school district's general fund balance decreased from \$2,916,298 in 2011, to \$1,851,966 in June 2015. According to the district's 2015-16 general fund budget, the balance is projected to have further decreased to \$3,743 for the fiscal year ending June 30, 2016.



During the period of June 30, 2010, through June 30, 2015, the district's total expenditures exceeded total revenues for four of the five years.

One of the factors cited for the increased expenditures is charter school tuition costs, which increased from approximately \$862,000 in 2010 to approximately \$1.25 million in 2015, an increase of approximately \$400,000, or 46 percent.

Pennsylvania cannot wait to reform charter school law

"The bottom line is this: Nearly 20 years have passed since charter schools were authorized to be established. We need to revisit Pennsylvania's charter school experience, and act now – not later – to overhaul the charter school law and do a very thorough tune-up on all aspects of charter school oversight and regulation," DePasquale said. "We can ill afford to continue to kick the can down the road when it comes to the education of more than 132,000 Pennsylvania students in our charter school system."

The audit reports are available online at:

- [Pennsylvania Cyber Charter School](#)
- [Lincoln Park Performing Arts Charter School](#)
- [Midland Borough School District](#)

###

Media contact: Susan Woods, 717-787-1381

EDITOR'S NOTE: A list of the 484 school districts that had students enrolled in PA Cyber Charter School as of Oct. 1, 2014, is available online at: www.PaAuditor.gov.

PA Cyber Charter School had 9,618 Students from 484 School Districts Enrolled as of Oct. 1, 2014

School District	Non-Special Enrollment	Special Enrollment
Abington Heights SD	3	2
Abington SD	12	3
Albert Gallatin Area SD	26	2
Aliquippa SD	14	7
Allegheny Valley SD	8	0
Allegheny-Clarion Valley SD	10	2
Allentown City SD	82	14
Altoona Area SD	37	8
Ambridge Area SD	52	14
Annaville-Cleona SD	13	1
Antietam SD	3	0
Apollo-Ridge SD	15	3
Armstrong SD	31	13
Athens Area SD	1	2
Avella Area SD	3	1
Avon Grove SD	8	2
Avonworth SD	8	1
Bald Eagle Area SD	5	0
Baldwin-Whitehall SD	23	5
Bangor Area SD	11	1
Beaver Area SD	23	5
Bedford Area SD	8	1
Belle Vernon Area SD	20	4
Bellefonte Area SD	30	4
Bellwood-Antis SD	1	0
Bensalem Township SD	5	1
Benton Area SD	4	1
Bentworth SD	16	2
Berlin Brothersvalley SD	5	2
Bermudian Springs SD	12	1
Berwick Area SD	21	2
Bethel Park SD	22	3
Bethlehem Area SD	54	13
Bethlehem-Center SD	10	3
Big Beaver Falls Area SD	21	3
Big Spring SD	26	10
Blackhawk SD	19	3
Blacklick Valley SD	5	3
Blairsville-Saltsburg SD	17	4
Bloomsburg Area SD	5	0
Blue Mountain SD	12	1
Blue Ridge SD	16	2
Boyertown Area SD	15	5
Bradford Area SD	5	1
Brandywine Heights Area SD	5	1
Brentwood Borough SD	15	6
Bristol Borough SD	5	0
Bristol Township SD	11	0
Brookville Area SD	2	1
Brownsville Area SD	27	7

PA Cyber Charter School had 9,618 Students from 484 School Districts Enrolled as of Oct. 1, 2014

School District	Non-Special Enrollment	Special Enrollment
Burgettstown Area SD	30	9
Burrell SD	4	4
Butler Area SD	100	15
California Area SD	19	4
Cambria Heights SD	1	0
Cameron County SD	1	1
Camp Hill SD	1	0
Canon-McMillan SD	42	7
Canton Area SD	11	0
Carbondale Area SD	4	4
Carlisle Area SD	28	3
Carlynton SD	19	0
Carmichaels Area SD	12	1
Catasauqua Area SD	2	1
Centennial SD	4	1
Central Bucks SD	12	1
Central Cambria SD	5	0
Central Columbia SD	3	3
Central Dauphin SD	78	15
Central Fulton SD	3	3
Central Greene SD	10	3
Central Valley SD	23	4
Central York SD	15	2
Chambersburg Area SD	38	6
Charleroi SD	11	7
Chartiers Valley SD	19	4
Chartiers-Houston SD	8	0
Cheltenham Township SD	5	0
Chester-Upland SD	106	8
Chestnut Ridge SD	4	2
Chichester SD	11	0
Clairton City SD	7	2
Clarion Area SD	4	0
Clarion-Limestone Area SD	8	1
Claysburg-Kimmel SD	1	2
Clearfield Area SD	31	5
Coatesville Area SD	30	3
Cocalico SD	12	0
Columbia Borough SD	11	4
Conemaugh Township Area SD	6	3
Conemaugh Valley SD	8	0
Conestoga Valley SD	15	1
Conewago Valley SD	22	2
Conneaut SD	67	10
Connellsville Area SD	79	19
Conrad Weiser Area SD	8	1
Cornell SD	8	0
Cornwall-Lebanon SD	13	2
Corry Area SD	28	3
Coudersport Area SD	2	0

PA Cyber Charter School had 9,618 Students from 484 School Districts Enrolled as of Oct. 1, 2014

School District	Non-Special Enrollment	Special Enrollment
Council Rock SD	7	3
Cranberry Area SD	9	2
Crawford Central SD	57	12
Crestwood SD	13	2
Cumberland Valley SD	29	7
Curwensville Area SD	4	0
Dallastown Area SD	21	2
Daniel Boone Area SD	5	3
Danville Area SD	6	0
Deer Lakes SD	5	0
Delaware Valley SD	20	5
Derry Area SD	25	6
Derry Township SD	12	2
Donegal SD	25	6
Dover Area SD	30	3
Downingtown Area SD	5	0
Dubois Area SD	15	0
Dunmore SD	2	0
Duquesne City SD	6	0
East Allegheny SD	20	3
East Lycoming SD	9	3
East Penn SD	25	3
East Pennsboro Area SD	7	6
East Stroudsburg Area SD	48	11
Eastern Lancaster County SD	13	2
Eastern Lebanon County SD	14	4
Eastern York SD	15	2
Easton Area SD	35	2
Elizabeth Forward SD	9	1
Elizabethtown Area SD	24	4
Elk Lake SD	6	2
Ellwood City Area SD	17	4
Ephrata Area SD	14	4
Erie City SD	151	38
Everett Area SD	6	2
Exeter Township SD	17	4
Fairfield Area SD	8	0
Fairview SD	2	1
Fannett-Metal SD	3	0
Farrell Area SD	2	0
Ferndale Area SD	7	0
Fleetwood Area SD	2	0
Forbes Road SD	7	0
Forest Area SD	1	2
Forest City Regional SD	3	0
Forest Hills SD	7	0
Fort Cherry SD	6	4
Fort LeBoeuf SD	16	6
Fox Chapel Area SD	11	2
Franklin Area SD	23	12

PA Cyber Charter School had 9,618 Students from 484 School Districts Enrolled as of Oct. 1, 2014

School District	Non-Special Enrollment	Special Enrollment
Franklin Regional SD	26	4
Frazier SD	10	3
Freedom Area SD	18	2
Freeport Area SD	7	1
Galeton Area SD	2	1
Garnet Valley SD	1	1
Gateway SD	21	7
General McLane SD	18	4
Gettysburg Area SD	9	3
Girard SD	20	9
Glendale SD	6	0
Governor Mifflin SD	7	2
Great Valley SD	1	3
Greater Johnstown SD	19	5
Greater Latrobe SD	29	9
Greater Nanticoke Area SD	8	6
Greencastle-Antrim SD	7	0
Greensburg Salem SD	48	10
Greenville Area SD	9	2
Greenwood SD	6	2
Grove City Area SD	24	5
Halifax Area SD	4	1
Hamburg Area SD	6	0
Hampton Township SD	10	1
Hanover Area SD	5	2
Hanover Public SD	21	0
Harbor Creek SD	11	3
Harmony Area SD	1	1
Harrisburg City SD	64	28
Hatboro-Horsham SD	1	1
Haverford Township SD	4	2
Hazleton Area SD	32	3
Hempfield SD	16	2
Hempfield Area SD	84	18
Hermitage SD	7	0
Highlands SD	14	2
Hollidaysburg Area SD	22	4
Homer-Center SD	7	0
Hopewell Area SD	38	9
Huntingdon Area SD	3	0
Indiana Area SD	16	4
Interboro SD	16	4
Iroquois SD	9	3
Jamestown Area SD	4	0
Jeannette City SD	24	6
Jefferson-Morgan SD	4	1
Jenkintown SD	0	1
Jersey Shore Area SD	22	2
Jim Thorpe Area SD	17	6
Johnsonburg Area SD	0	1

PA Cyber Charter School had 9,618 Students from 484 School Districts Enrolled as of Oct. 1, 2014

School District	Non-Special Enrollment	Special Enrollment
Juniata County SD	10	4
Juniata Valley SD	2	1
Kane Area SD	2	0
Karns City Area SD	24	6
Kennett Consolidated SD	5	1
Keystone SD	12	3
Keystone Central SD	40	5
Keystone Oaks SD	11	3
Kiski Area SD	56	9
Kutztown Area SD	2	0
Lackawanna Trail SD	7	2
Lakeland SD	11	2
Lake-Lehman SD	6	2
Lakeview SD	18	1
Lampeter-Strasburg SD	12	2
Lancaster SD	27	5
Laurel Highlands SD	33	4
Laurel SD	6	1
Lebanon SD	6	5
Leechburg Area SD	5	1
Lehighton Area SD	10	0
Lewisburg Area SD	11	1
Ligonier Valley SD	19	2
Line Mountain SD	12	6
Littlestown Area SD	16	1
Lower Dauphin SD	14	8
Lower Merion SD	2	0
Lower Moreland Township SD	1	0
Loyalsock Township SD	7	0
Mahanoy Area SD	1	0
Manheim Central SD	15	6
Manheim Township SD	23	4
Marion Center Area SD	16	3
Marple Newtown SD	1	0
Mars Area SD	27	3
McGuffey SD	27	2
McKeesport Area SD	45	7
Mechanicsburg Area SD	16	6
Mercer Area SD	4	3
Methacton SD	3	0
Meyersdale Area SD	3	1
Mid Valley SD	2	1
Middletown Area SD	10	3
Midd-West SD	22	2
Midland Borough SD	11	2
Mifflin County SD	8	2
Mifflinburg Area SD	34	2
Millcreek Township SD	20	9
Millersburg Area SD	5	2
Millville Area SD	8	0

PA Cyber Charter School had 9,618 Students from 484 School Districts Enrolled as of Oct. 1, 2014

School District	Non-Special Enrollment	Special Enrollment
Milton Area SD	6	1
Minersville Area SD	2	1
Mohawk Area SD	10	3
Monessen City SD	4	2
Moniteau SD	22	5
Montgomery Area SD	7	1
Montour SD	12	3
Montoursville Area SD	2	3
Montrose Area SD	18	1
Moon Area SD	41	9
Morrisville Borough SD	2	0
Moshannon Valley SD	13	1
Mount Carmel Area SD	18	1
Mount Pleasant Area SD	36	8
Mount Union Area SD	1	1
Mountain View SD	14	2
Mt Lebanon SD	6	1
Muhlenberg SD	5	1
Muncy SD	6	0
Nazareth Area SD	25	5
Neshaminy SD	10	2
Neshannock Township SD	1	3
New Brighton Area SD	17	2
New Castle Area SD	38	4
New Kensington-Arnold SD	21	4
Newport SD	5	2
Norristown Area SD	8	4
North Allegheny SD	36	5
North Clarion County SD	4	2
North East SD	15	3
North Hills SD	32	11
North Penn SD	11	6
North Pocono SD	9	3
North Schuylkill SD	13	1
North Star SD	14	4
Northampton Area SD	27	1
Northeast Bradford SD	7	1
Northeastern York SD	26	3
Northern Bedford County SD	2	1
Northern Cambria SD	2	0
Northern Lebanon SD	19	2
Northern Lehigh SD	6	1
Northern Tioga SD	5	1
Northern York County SD	8	3
Northgate SD	7	2
Northwest Area SD	9	0
Northwestern SD	15	6
Northwestern Lehigh SD	16	1
Norwin SD	60	10
Octorara Area SD	5	0

PA Cyber Charter School had 9,618 Students from 484 School Districts Enrolled as of Oct. 1, 2014

School District	Non-Special Enrollment	Special Enrollment
Oil City Area SD	25	7
Old Forge SD	3	0
Oley Valley SD	1	1
Oswayo Valley SD	0	2
Otto-Eldred SD	6	0
Owen J Roberts SD	9	3
Oxford Area SD	10	1
Palisades SD	4	1
Palmerton Area SD	4	0
Palmyra Area SD	29	6
Panther Valley SD	5	0
Parkland SD	18	5
Pen Argyl Area SD	7	1
Penn Cambria SD	11	1
Penn Hills SD	50	9
Penn Manor SD	29	3
Penncrest SD	64	19
Penn-Delco SD	3	0
Penndel SD	30	3
Penns Manor Area SD	3	1
Penns Valley Area SD	20	3
Pennsbury SD	8	3
Penn-Trafford SD	33	8
Pequea Valley SD	14	1
Perkiomen Valley SD	5	2
Peters Township SD	23	2
Philadelphia City SD	383	42
Philipsburg-Osceola Area SD	15	2
Pine Grove Area SD	3	1
Pine-Richland SD	25	3
Pittsburgh SD	241	60
Pittston Area SD	19	4
Pleasant Valley SD	69	7
Plum Borough SD	46	5
Pocono Mountain SD	53	11
Portage Area SD	3	0
Pottsgrove SD	13	0
Pottstown SD	2	1
Pottsville Area SD	5	1
Punxsutawney Area SD	19	1
Purchase Line SD	16	2
Quaker Valley SD	4	3
Quakertown Community SD	32	1
Reading SD	28	5
Red Lion Area SD	28	8
Redbank Valley SD	3	0
Reynolds SD	8	1
Richland SD	5	1
Ridgway Area SD	2	1
Ridley SD	9	2

PA Cyber Charter School had 9,618 Students from 484 School Districts Enrolled as of Oct. 1, 2014

School District	Non-Special Enrollment	Special Enrollment
Ringgold SD	39	12
Riverside Beaver County SD	32	2
Riverside SD	4	2
Riverview SD	3	0
Rochester Area SD	16	3
Rockwood Area SD	24	7
Rose Tree Media SD	4	1
Saint Clair Area SD	2	0
Saint Marys Area SD	7	0
Salisbury Township SD	9	1
Saucon Valley SD	9	1
Sayre Area SD	1	0
Schuylkill Haven Area SD	2	1
Schuylkill Valley SD	1	1
Scranton SD	15	5
Selinsgrove Area SD	11	3
Seneca Valley SD	43	16
Shade-Central City SD	9	3
Shaler Area SD	27	8
Shamokin Area SD	19	3
Shanksville-Stonycreek SD	10	0
Sharon City SD	11	2
Shenandoah Valley SD	2	1
Shenango Area SD	11	4
Shikellamy SD	14	3
Shippensburg Area SD	37	13
Slippery Rock Area SD	51	5
Smethport Area SD	13	1
Solanco SD	13	1
Somerset Area SD	31	5
Souderton Area SD	25	1
South Allegheny SD	7	1
South Butler County SD	15	4
South Eastern SD	23	1
South Fayette Township SD	14	0
South Middleton SD	10	3
South Park SD	4	3
South Side Area SD	13	1
South Western SD	20	1
South Williamsport Area SD	4	2
Southeast Delco SD	15	3
Southeastern Greene SD	1	1
Southern Columbia Area SD	1	2
Southern Fulton SD	2	0
Southern Huntingdon County SD	2	1
Southern Lehigh SD	9	3
Southern Tioga SD	24	4
Southern York County SD	7	1
Southmoreland SD	22	6
Spring Cove SD	9	2

PA Cyber Charter School had 9,618 Students from 484 School Districts Enrolled as of Oct. 1, 2014

School District	Non-Special Enrollment	Special Enrollment
Spring Grove Area SD	19	2
Springfield Township SD	2	1
Spring-Ford Area SD	10	4
State College Area SD	11	4
Steel Valley SD	9	0
Steelton-Highspire SD	14	2
Sto-Rox SD	21	7
Stroudsburg Area SD	15	3
Sullivan County SD	11	1
Susquehanna Community SD	1	1
Susquehanna Township SD	23	4
Susquenita SD	20	5
Tamaqua Area SD	9	2
Titusville Area SD	8	5
Towanda Area SD	3	0
Tredyffrin-Easttown SD	4	0
Trinity Area SD	15	4
Tri-Valley SD	3	0
Troy Area SD	17	1
Tulpehocken Area SD	8	2
Tunkhannock Area SD	7	1
Turkeyfoot Valley Area SD	1	0
Tuscarora SD	6	2
Tussey Mountain SD	6	1
Twin Valley SD	3	1
Tyrone Area SD	14	1
Union Area SD	8	1
Union City Area SD	7	7
Union SD	17	1
Uniontown Area SD	43	6
Unionville-Chadds Ford SD	2	0
United SD	4	0
Upper Adams SD	4	1
Upper Darby SD	27	6
Upper Dauphin Area SD	12	1
Upper Dublin SD	4	1
Upper Merion Area SD	2	1
Upper Moreland Township SD	1	0
Upper Perkiomen SD	26	3
Upper Saint Clair SD	3	1
Valley Grove SD	5	3
Wallenpaupack Area SD	10	3
Wallingford-Swarthmore SD	3	0
Warren County SD	27	4
Warrior Run SD	18	5
Warwick SD	17	1
Washington SD	8	0
Wattsburg Area SD	25	2
Wayne Highlands SD	8	3
Waynesboro Area SD	16	2

PA Cyber Charter School had 9,618 Students from 484 School Districts Enrolled as of Oct. 1, 2014

School District	Non-Special Enrollment	Special Enrollment
Weatherly Area SD	3	0
Wellsboro Area SD	9	4
West Allegheny SD	11	5
West Branch Area SD	12	3
West Chester Area SD	11	1
West Greene SD	4	2
West Jefferson Hills SD	20	4
West Middlesex Area SD	9	3
West Mifflin Area SD	12	4
West Perry SD	35	12
West Shore SD	62	12
West York Area SD	17	2
Western Beaver County SD	14	4
Western Wayne SD	8	1
Westmont Hilltop SD	1	0
Whitehall-Coplay SD	13	3
Wilkes-Barre Area SD	23	4
Wilkesburg Borough SD	19	4
William Penn SD	29	4
Williams Valley SD	5	1
Williamsport Area SD	36	5
Wilmington Area SD	23	3
Wilson SD	11	0
Wilson Area SD	0	4
Windber Area SD	7	1
Wissahickon SD	1	1
Woodland Hills SD	53	11
Wyalusing Area SD	16	2
Wyoming Area SD	8	0
Wyoming Valley West SD	19	5
Wyomissing Area SD	4	1
York City SD	37	9
York Suburban SD	15	3
Yough SD	32	4
Subtotal	8,037	1,581
Total	9,618	