

AUDITING PENN STATE UNIVERSITY



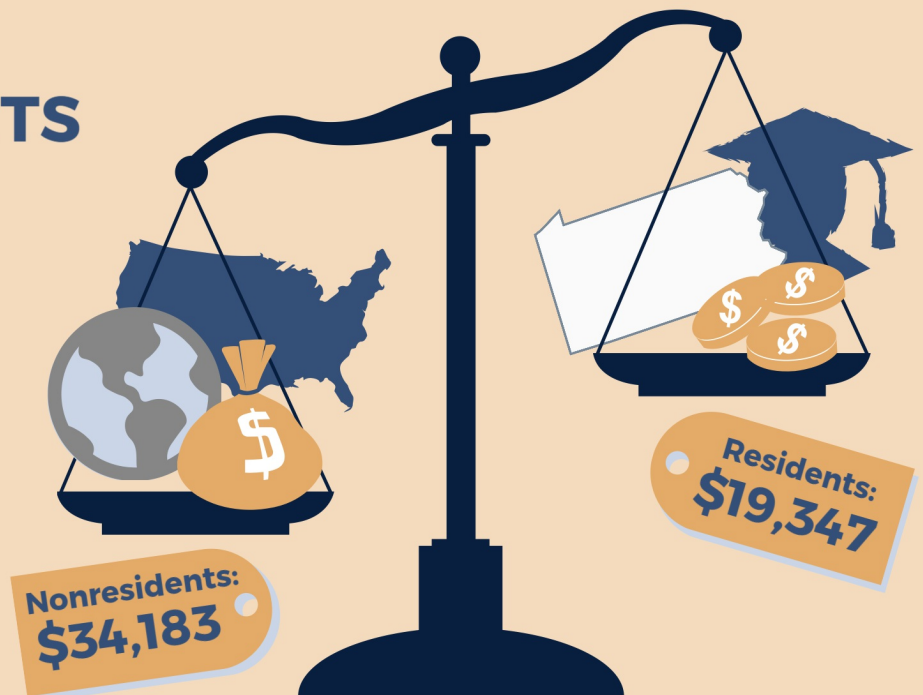
Penn State University is part of a growing national trend in higher education to give preference to nonresident students in favor of out-of-state and international students to help subsidize, rather than control, increasing costs.

ADMISSIONS:

ARE PA STUDENTS GETTING A FAIR SHOT?

Consider this: In 2016-17, Penn State University received \$14,836 more for each out-of-state or international student compared with Pennsylvania students.

Fewer Pennsylvania students means more dollars in PSU's pocket.



FROM 1990 TO 2016...

Data indicates that in recent years, nonresident student enrollment at University Park is increasing at a higher rate than Pennsylvania student enrollment.

Pa. Resident

12%

Out-of-State

95%

International

310%